



# SCUBAMP

## BREATHING AIR AMPLIFIER

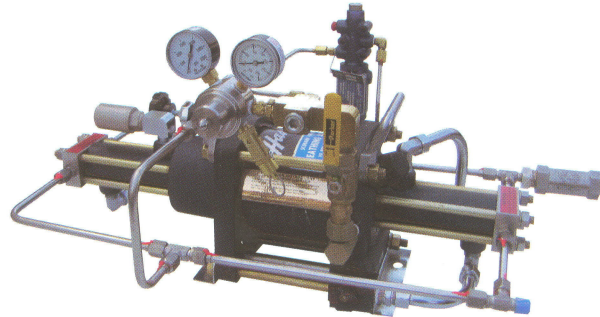
### HIGH PRESSURE FILLS FROM MEDIUM PRESSURE SYSTEM

- Provides 2,500 psi up to 4,400 psi scuba tank fills to satisfy the busiest dive shop.
- Boosts medium pressure storage air straight into dive tanks to requested higher pressures rapidly.

### MEDIUM PRESSURE COMPRESSOR SYSTEM BENEFITS:

- Cooler operation to extend time between overhauls by thousands of hours regardless of compressor nameplate rating.
- Lower cost storage cylinders, purifier units, compressors, motors and piping.

With a Model 28153 ScubAmp, existing air compressor systems can stay within their 2,000-2,500 psi. New systems can be set back to medium pressure.



TYPICAL FILL TIMES - MODEL 28153

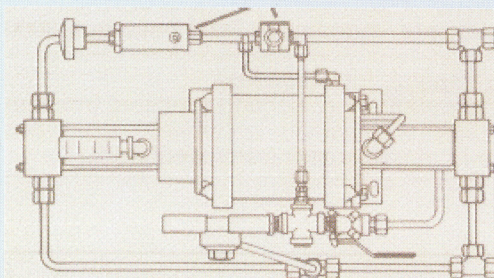
FROM PRESSURE IN STORAGE (AFTER EQUALIZING IN DIVE TANK)	TO NOMINAL TANK SIZE AND PRESSURE			
	83 Cu. Ft. to 3,000 psi	71.2 Cu. Ft. to 2,475 psi	71.2 Cu. Ft. to 2,250 psi	80 Cu. Ft. to 4,400 psi
2,500 psi	12 sec.			60 sec.
2,250 psi	28 sec.	14 sec.		90 sec.
2,000 psi	39 sec.	22 sec.	12 sec.	
1,500 psi	75 sec.	50 sec.	35 sec.	

### ONLY 2 SIMPLE CONNECTIONS NEEDED:

37° MALE FLARE, 9/16-18 THREAD FOR 3/8" O.D. TUBE (MAY BE REDUCED TO 1/4"). ALTERNATE AIR DRIVE: 1/2" NPT.

SIZE 15' X 15' X 20  
WEIGHT: 50 lbs. (Approx.)

Complete power pressure directly from and safety controls provide existing air storage.



Positive maximum pressure setting adjustment  
700 to 5,000 psi range with independent safety relief valve.

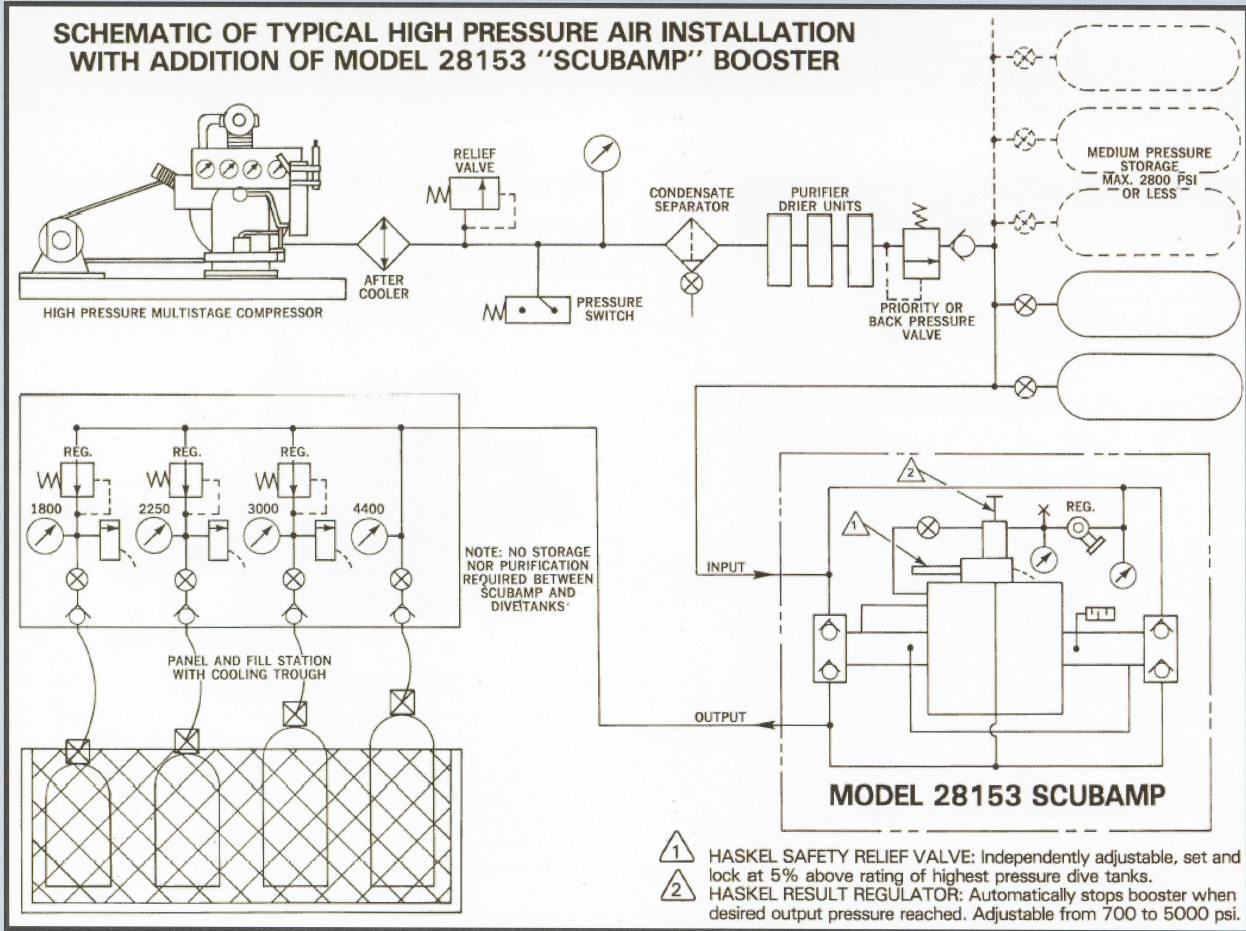
PURIFIED BOOSTED AIR OUT  
PURIFIED STORAGE AIR IN

Directly to dive tank up to 4,400 psi.

From existing compressor storage bank up to 2,800 psi.

# SCUBAMP BREATHING AIR AMPLIFIER

## SCHEMATIC OF TYPICAL HIGH PRESSURE AIR INSTALLATION WITH ADDITION OF MODEL 28153 "SCUBAMP" BOOSTER



### SPECIFICATIONS

- BOOSTER: Sir driven, balanced opposed double acting piston type.
- HIGH PRESSURE SECTION : Non-Lube, contaminant free, triple sealed and vented from air drive section.  
Materials: Stainless steel.
- DRIVE SECTION: Silicone lubed at assembly, corrosion resistant, exhaust muffler.
- STANDARD CONTROLS: All pneumatic. Automatic stop at adjusted maximum pressure, plus independent manual stop valve and high pressure safety relief valve. Optional controls (extra cost): Remote on-off: automatic start after equalizing.
- GAUGES: Input pressure (from storage): 0 - 3000 psi. Drive Pressure: 0 - 3000
- AIR POWER CONSUMPTION: From approximately 1/3 cu. ft. @ 2,200 psi boost - for each cu. ft. of air boosted.
- MAXIMUM OUTPUT FLOW: 70 scfm (nominal @ 2500 psi input, 3000 output)
- COOLING: With air exhaust, integral, fully jacketed.
- NOISE: 80 Db range pulses, depending on working pressure (measured at 30 inches from booster).
- MAINTENANCE: Simple sealkit replacement (rarely required).



### HASKEL INTERNATIONAL, INC.

100 East Graham Place  
 Burbank, California 91502 • USA  
 Telephone: (818) 843-4000  
 Fax: (818) 556-2549 or (818) 841-4291  
 www.haskel.com



For further information on Haskel products, visit our website at: [www.haskel.com](http://www.haskel.com)